



Vanity Design

Advances in materials and choice of sanitary ware means that the options for vanities have never been greater. Petal's vanity systems are available in solid surface, natural stone, glass and both Compact Grade and High Pressure Laminate options, ensuring a suitable solution for every project and budget. Bespoke options are also available for premium projects seeking an additional wow factor.

Inset Bowls

Inset wash hand basins sit within a counter top or vanity unit to create a minimalist aesthetic and create more space on the counter top.



Semi Recessed

Inset surface mounted basins may be semi recessed exposing the front of the basin for an alternative style.



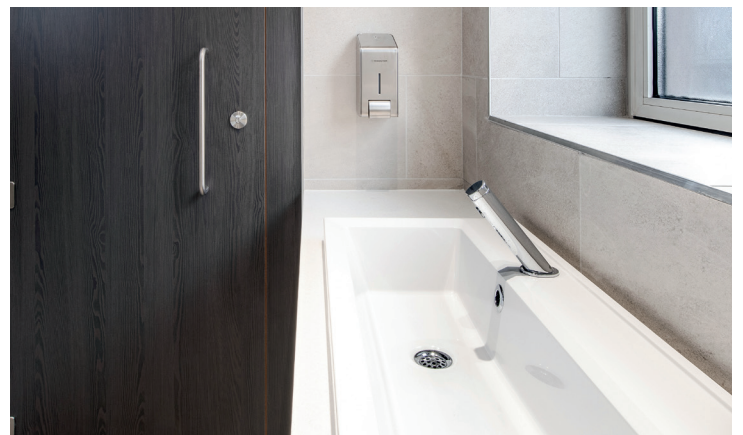
Under Counter

Basins may be fitted under counter creating a clean counter top finish. Often used in conjunction with granites and other materials.



Trough

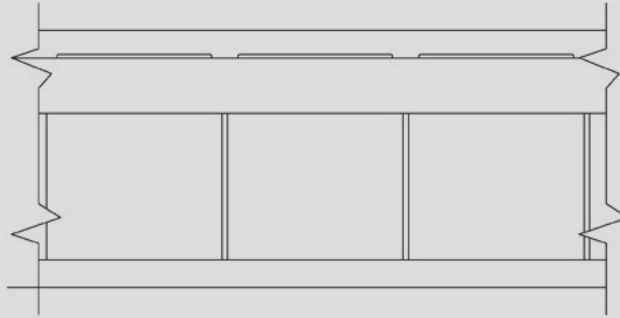
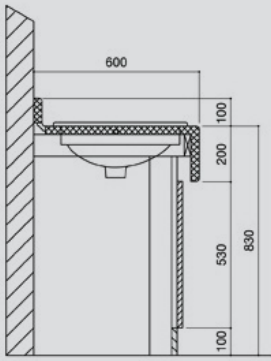
Trough options provide a streamlined aesthetic and with bespoke options available are suitable for premium venues.



Petal has developed a robust technical solution to accommodate the diverse range of vanities which can be specified in each washroom. Our technical team will provide a tailored solution which ensures appropriate fixing details are provided in each washroom design.

Bespoke Vanities

In addition to the standard vanity layouts shown below we can accommodate bespoke designs including troughs, wallhung glass etc

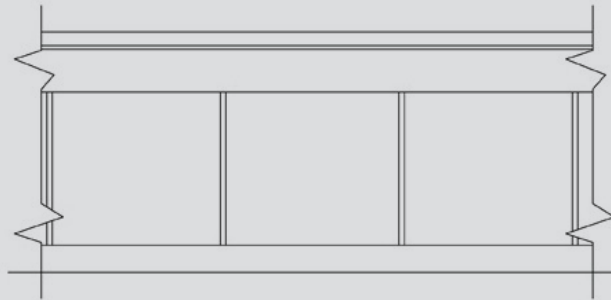
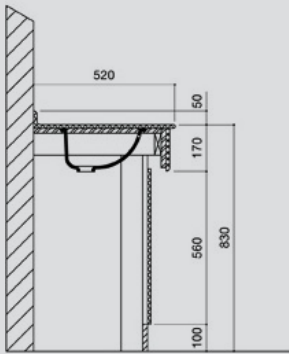


Postformed Vanity to suit inset WHB

Standard height – 830mm FFL

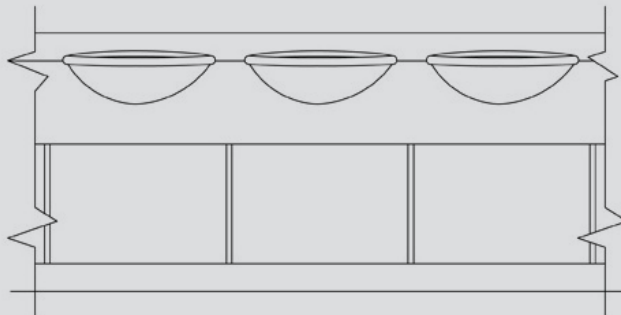
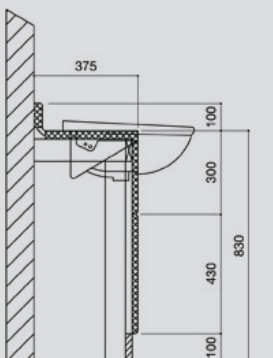
Education option – 720mm FFL

Nursery option – 600mm FFL



Solid Surfacing Vanity to suit inset & under mounted WHBs

Standard height – 830mm FFL

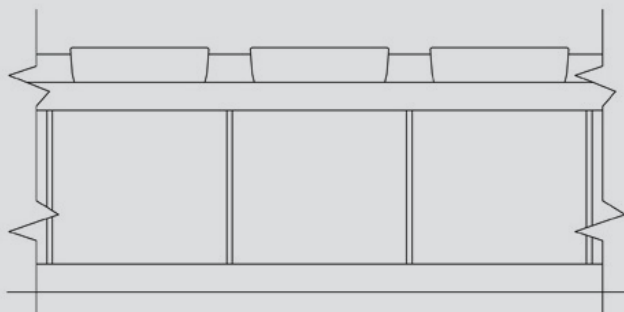
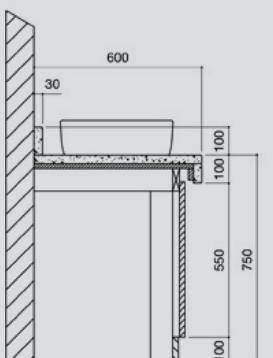


Postformed Vanity to suit semi-recessed WHB

Standard height – 830mm FFL

Education option – 720mm FFL

Nursery option – 600mm FFL



Granite Vanity to suit inset & under mounted WHBs

Standard height – 830mm FFL